

Private

Single family house

A concrete building with large glass fronts for lots of natural light. Curtains in the rooms serve as privacy screens, support the room acoustics and give the room warmth.



Starting Point

The house has an extraordinary, lengthwise shape, is closed on the sides, and rises above the slope as if it was floating.

It gives you a mere glimpse of the generosity inside—consisting of a single continuous room, with the exception of the three bedrooms.

Solution

Large glass banks put their stamp on all the rooms. Depending upon the weather, the light in the room changes – natural light comes from above, front and below.

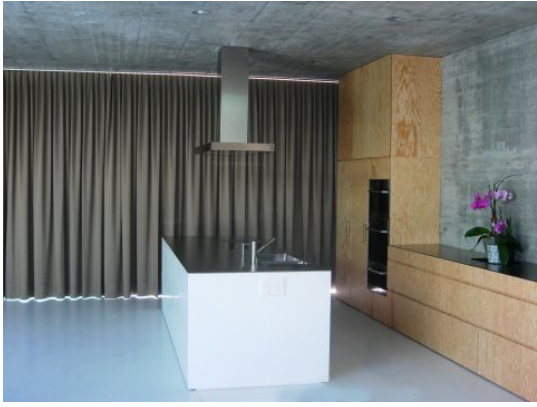
Curtains run with curtain tracks Unotrac provide additional protection against prying eyes, wind, and cool evening temperatures.

Object

Single family house, Langenthal, Switzerland

Concept

Jan Kinsbergen, Zurich, Switzerland / Steffen Raumkonzepte AG, Herzogenbuchsee, Switzerland



Textiles Used



DIMMER IV

Article-Number: 0005400

Use: Dim-out fabric/blackout

Number of colors: 54

Material: 100% Flame retardant (Trevira CS)

Fabric width: 150 cm/59 inch/1.64 yard

Weight: 260 g/m²

Sound absorption: α_w 0.60

Abrasion resistance: 23'000 Martindale

Pilling: 4-5

Light fastness: 6-7