

Office

Showroom Création Baumann – Tokyo

Concrete walls, large glass fronts and many people in one room require flexible acoustic and visual separation.



Starting Point

The upper floor of the Tokyo showroom is a large space used as an office and meeting room.

A room used by many employees and equipped with concrete walls and large glass fronts requires a flexible and individually controllable separation, both visually and acoustically.

Solution

To divide the working room from the meeting room, Arno was used as a 4-layer acoustic divider Vario. If required, this can be pulled out and thus offers the desired privacy. In addition, Voile Tinto zones the area and serves as a splash of colour.

Object

Showroom Création Baumann, Tokyo, Japan

Concept

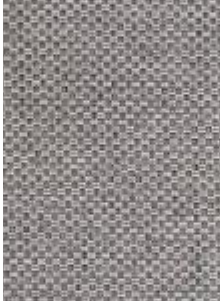
Création Baumann Japan, Tokyo, Japan

Photos

Ichiro Mishima, Japan



Textiles Used



ARNO

Article-Number: 0101295

Use: Upholstery fabric for contract use

Number of colors: 34

Material: 100% Flame retardant (Trevira CS)

Fabric width: 140 cm/55 inch/1.53 yard

Weight: 381 g/m²

Sound absorption: α_w 0.90

Abrasion resistance: 40'000 Martindale

Pilling: 4-5

Light fastness: 4-5



VOILE TINTO

Article-Number: 0101685

Use: Transparent/semi-transparent curtain fabric

Number of colors: 3

Material: 100% Flame retardant (Trevira CS)

Fabric width: 295 cm/116 inch/3.23 yard

Weight: 51 g/m²

Light fastness: 5



SINFONIAACOUSTIC CUBE

Article-Number: 0101985

Use: Transparent/semi-transparent curtain fabric

Number of colors: 4

Material: 100% Flame retardant (Trevira CS)

Fabric width: 295 cm/116 inch/3.23 yard

Weight: 105 g/m²

Sound absorption: α_w 0.60

Light fastness: 5