

Healthcare

# Akutspital Psychiatrie SRO – Langenthal

Light and vivid colours create a comfortable atmosphere for patients and their visitors.



## Starting Point

The redesign of the psychiatry department is intended to quell the emerging fears of the patients and their families, and demonstrate that they are held in high esteem. Lots of light, vibrant colours and different materials convey a welcoming and homely atmosphere.

## Solution

A colour concept with vibrant, playful colours and the use of natural materials was of utmost importance.

The furniture in the reception area is organic, covered among others with TONY and decorated with in bright fresh colors. Appropriately, the curtain material in the reception area and the communal rooms conveys freshness.

The strict length of the corridor is broken up by coloured strips. In the patient rooms and offices, a semi-transparent curtain offers protection from prying eyes, whereby light still penetrates the room.

## Object

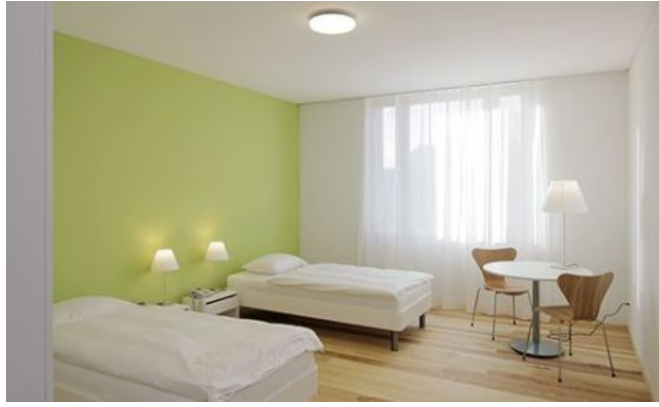
Akutspital Psychiatrie SRO, Langenthal, Switzerland

## Concept

Blum und Grossenbacher Architekten, Langenthal / Design Alexa Blum GmbH, Langenthal / Oechsli, Huttwil, Switzerland

## Photos

Daniel Sutter, Switzerland



# Textiles Used

---



## SONOR III COL. 228/229

**Article-Number:** 0005911

**Use:** Transparent/semi-transparent curtain fabric

**Number of colors:** 2

**Material:** 100% Flame retardant (Trevira CS)

**Fabric width:** 330 cm/130 inch/3.61 yard

**Weight:** 170 g/m<sup>2</sup>

**Sound absorption:**  $\alpha_w$  0.15

**Light fastness:** 5-6

---



## VELOS II

**Article-Number:** 0100135

**Use:** Upholstery fabric for contract use

**Number of colors:** 27

**Material:** 100% Flame retardant (Trevira CS)

**Fabric width:** 140 cm/55 inch/1.53 yard

**Weight:** 450 g/m<sup>2</sup>

**Sound absorption:**  $\alpha_w$  0.85

**Abrasion resistance:** 90'000 Martindale

**Pilling:** 5

**Light fastness:** 5-6

---



## LORD IV

**Article-Number:** 0100130

**Use:** Dense curtain fabric

**Number of colors:** 35

**Material:** 100% Flame retardant (Trevira CS)

**Fabric width:** 150 cm/59 inch/1.64 yard

**Weight:** 349 g/m<sup>2</sup>

**Sound absorption:**  $\alpha_w$  0.70

**Abrasion resistance:** 60'000 Martindale

**Pilling:** 4

**Light fastness:** 5-6