

Education/Culture

# Collège et Centre Communal – Belmont

The façade of the Collège et Centre Communal in Belmont is playfully orchestrating an everyday item—the curtain.



## Starting Point

The annex is more than just an addition to the existing school building. Instead, it reinforces the character and status of the existing complex as a public space, school, and community centre.

The large glass surfaces invite an abundance of light inside without compromising energy efficiency and visitor experience.

## Solution

The façade, visually transparent and staging constant change, playfully orchestrates an everyday item, the curtain—alternately acting as a veil, a light screen, or an element set in motion.

Its sheer, aluminium-metallised fabric provides an optimum of UV and glare protection. The motorised curtains are set inside double-glazing

## Object

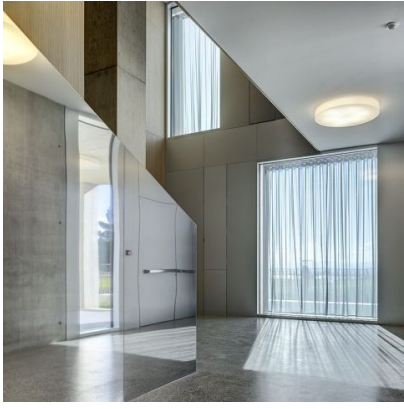
Collège et Centre Communal, Belmont, Switzerland

## Concept

2b architectes, Lausanne | Acoustics engineer: Bernard Braune, Binz | Facade engineer: BCS, Neuchâtel, Switzerland

## Photos

Roger Frei, Switzerland



# Textiles Used

---



## SHADOW V -285

**Article-Number:** 0102005

**Use:** Transparent/semi-transparent curtain fabric

**Number of colors:** 7

**Material:** 100% Flame retardant (Trevira CS)

**Fabric width:** 285 cm/112 inch/3.12 yard

**Weight:** 131 g/m<sup>2</sup>

**Sound absorption:**  $\alpha_w$  0.20

**Light fastness:** 5