

Private

Townhouse – New York

Extraordinary dimensions require exceptional solutions.



Starting Point

Erik Bruce usually adopts a uniform approach in his projects that provides an architectural impact in the window design. But what happens when the rooms to be furnished are so different that this is not possible? Spacious rooms and a window façade extending up to six metres high require interior design measures that correspond to the extraordinary dimensions.

Solution

All windows in the town house are north-facing with a low influx of natural light.

The living room is dominated by a six metre high window. It was important to find a design here that was appropriate for the size of the room. The design team focused on the ombré effect with five different colours, creating their own pattern in the curtains – a wonderful effect. Custom-made cushions complete the overall image.

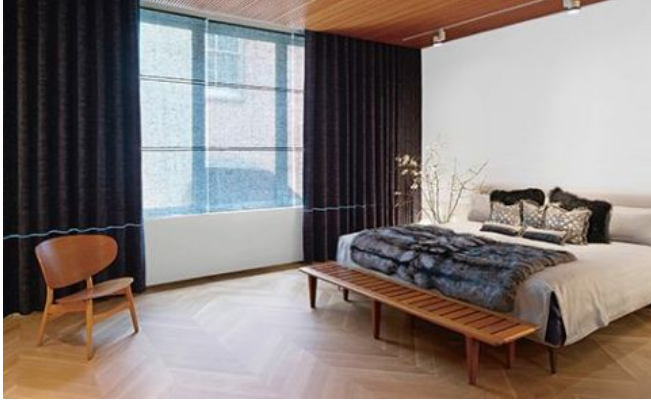
There is a wide window very close to the floor in the large bedroom. The interior designer focused on the horizontal feeling of the room with a sophisticated range of dark colours. The upholstery fabric VICTOR was used as curtain and Roman blinds were made from the extra wide linen fabrics.

Object

Townhouse, New York, America

Concept

Erik Bruce Fabrik, New York, America



Textiles Used



VELLING III

Article-Number: 0035300

Use: Upholstery fabric for domestic use

Number of colors: 36

Material: 100% Cotton

Fabric width: 140 cm/55 inch/1.53 yard

Weight: 395 g/m²

Sound absorption: α_w 0.75

Abrasion resistance: 30'000 Martindale

Light fastness: see downloads



TURMALIN II

Article-Number: 0036710

Use: Transparent/semi-transparent curtain fabric

Number of colors: 25

Material: 100% Flame retardant (Trevira CS)

Fabric width: 300 cm/118 inch/3.28 yard

Weight: 47 g/m²

Light fastness: see downloads



RAMIN

Article-Number: 0101505

Use: Dense curtain fabric

Number of colors: 33

Material: 65% Silk / 35% Viscose

Fabric width: 140 cm/55 inch/1.53 yard

Weight: 179 g/m²

Light fastness: 3



RAINA

Article-Number: 0101530

Use: Dense curtain fabric

Number of colors: 26

Material: 100% Silk

Fabric width: 140 cm/55 inch/1.53 yard

Weight: 93 g/m²

Light fastness: 3



VICTOR

Article-Number: 0101535

Use: Upholstery fabric for domestic use

Number of colors: 17

Material: 38% Polyester / 35% Viscose / 27% Cotton

Fabric width: 140 cm/55 inch/1.53 yard

Weight: 471 g/m²

Abrasion resistance: 20'000 Martindale

Pilling: 5

Light fastness: 5



GINGER

Article-Number: 0101550

Use: Transparent/semi-transparent curtain fabric

Number of colors: 16

Material: 100% Linen

Fabric width: 320 cm/126 inch/3.50 yard

Weight: 144 g/m²

Light fastness: 4-5



DAPHNE

Article-Number: 0101575

Use: Dense curtain fabric

Number of colors: 14

Material: 61% Cotton / 32% Polyester / 7% Acrylic

Fabric width: 140 cm/55 inch/1.53 yard

Weight: 229 g/m²

Light fastness: 4-5



MAIRA

Article-Number: 0101580

Use: Dense curtain fabric

Number of colors: 14

Material: 43% Viscose / 26% Polyester / 17% Linen / 14% Cotton

Fabric width: 140 cm/55 inch/1.53 yard

Weight: 293 g/m²

Abrasion resistance: 10'000 Martindale

Pilling: 5

Light fastness: 4-5



DALIA

Article-Number: 0101650

Use: Dense curtain fabric

Number of colors: 3

Material: 66% Cotton / 34% Polyester

Fabric width: 140 cm/55 inch/1.53 yard

Weight: 207 g/m²

Abrasion resistance: 22'000 Martindale

Pilling: 5

Light fastness: 4-5