

Health Care, Hospitality

# Lanserhof at the Arts Club – London

This high-end project combines a top-class fitness studio with innovative medical treatment rooms.



## Starting Point

The Arts Club, founded in 1863 by the writer Charles Dickens, amongst others, is one of the oldest private members' clubs in London and to this day remains a meeting place for creative individuals and entrepreneurs. In future, members of the Lanserhof at The Arts Club will be able to use a top-class medical fitness studio with course and treatment rooms and benefit from comprehensive and innovative medical facilities, including MRI.

While the lounge on the first floor is in keeping with the interior of The Arts Club, the areas for sport and high-end diagnostics on the four upper floors and in the basement focus on a simpler design in the style of the Lanserhof.

## Solution

The atmosphere and choice of materials conforms exactly to the specification developed for the Lanserhof Medical Spas: a bright and simple design and environmentally friendly materials, which have been tested to ensure that they satisfy the health criteria.

The textiles from Création Baumann were chosen because of their exceptional high quality, sustainability and privacy. Both fabrics are certified according to the Oeko-Tex standard to ensure that they do not contain any harmful substances.

## Object

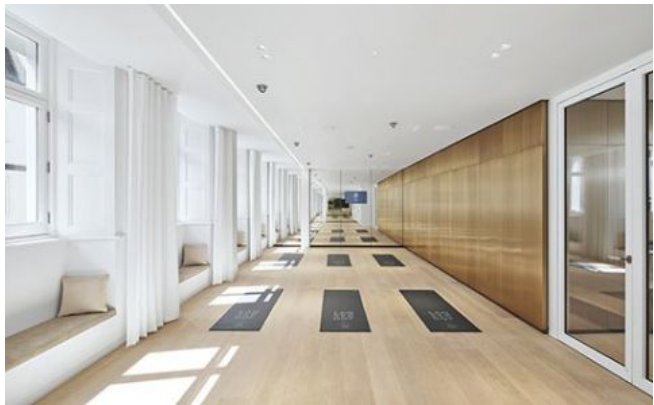
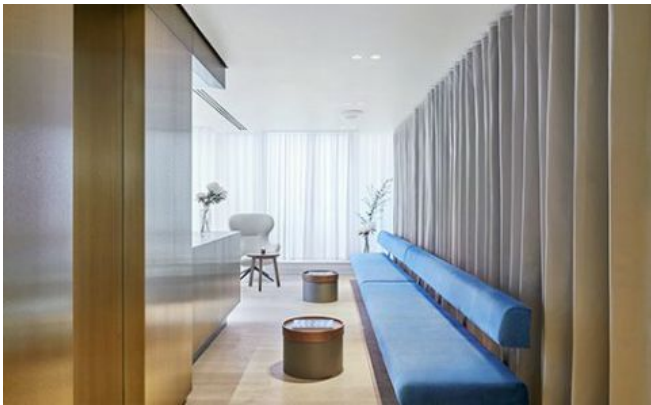
Lanserhof at the Arts Club, London, England

## Concept

Forge Architects, London, England /  
 ingenhoven architects, Düsseldorf, Germany /  
 ILE Solutions, High Wycombe, England

## Photos

Martin Morrell, "for the Lanserhof", England



# Textiles Used

---



## SALTO

**Article-Number:** 0100440

**Use:** Transparent/semi-transparent curtain fabric

**Number of colors:** 12

**Material:** 100% Polyester flame retardant

**Fabric width:** 300 cm/118 inch/3.28 yard

**Weight:** 135 g/m<sup>2</sup>

**Sound absorption:**  $\alpha_w$  0.30

**Light fastness:** 6

---



## USUS III

**Article-Number:** 0004725

**Use:** Dense curtain fabric

**Number of colors:** 39

**Material:** 100% Flame retardant (Trevira CS)

**Fabric width:** 150 cm/59 inch/1.64 yard

**Weight:** 291 g/m<sup>2</sup>

**Sound absorption:**  $\alpha_w$  0.65

**Abrasion resistance:** 28'000 Martindale

**Pilling:** 4

**Light fastness:** see downloads