

Private

Vetro apartments – London

Contemporary living spaces in dynamic London.



Starting point

The penthouse flats at Vetro combine dynamic living in the heart of London's capital with a desire for well-being and tranquillity.

Solution

The architectural firm Simpson Haugh commissioned Création Baumann to select the curtain fabrics for the two show flats. The natural colour selection of the PRATO and TURMALIN II products creates a pleasant ambience. In the bedrooms, the combination of PRATO with the OSCULARGO FR blackout allows flexible darkening of the light-flooded rooms.

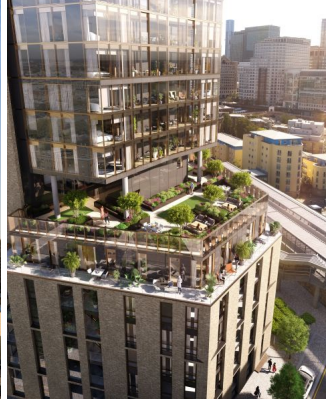
Objekt

Vetro, London, England

Konzept

Simpson Haugh, London, England
simpsonhaugh.com





Textiles Used



PRATO

Article-Number: 0101275

Use: Dense curtain fabric

Number of colors: 26

Material: 100% Flame retardant (Trevira CS)

Fabric width: 150 cm/59 inch/1.64 yard

Weight: 227 g/m²

Sound absorption: α_w 0.50

Light fastness: 6-7



TURMALIN II

Article-Number: 0036710

Use: Transparent/semi-transparent curtain fabric

Number of colors: 25

Material: 100% Flame retardant (Trevira CS)

Fabric width: 300 cm/118 inch/3.28 yard

Weight: 47 g/m²

Light fastness: see downloads



OSCULARGO FR

Article-Number: 0010404

Use: Dim-out fabric/blackout

Number of colors: 2

Material: 60% Acrylic / 21% Polyester / 19% Cotton

Fabric width: 275 cm/108 inch/3.01 yard

Weight: 298 g/m²

Light fastness: 6